



CLIMB ON

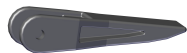
FLIPPER AND SPRING REPLACEMENT

READ THESE INSTRUCTIONS COMPLETELY BEFORE YOU START. IF YOU DON'T UNDERSTAND THESE INSTRUCTIONS, PLEASE CALL 800-453-1192 FOR ASSISTANCE

Procedure for replacing the flipper and spring on Little Giant Ladder Systems **Extension** ladders.

1. Failure to comply with all instructions may result in serious injury.
2. Make sure this kit is compatible with your ladder. If you have any questions concerning the use of this kit on Little Giant Ladder Systems products, call 800-453-1192 for assistance.
3. Before installing this kit, identify all kit components. If any components are missing or damaged, please contact Customer Care. Do not substitute any components.
4. Inspect the ladder before installing this kit. Repair or replace any damaged or missing ladder parts before using the ladder. Use only Little Giant Ladder Systems repair or replacement parts. If you are unable to repair it, discard the ladder.

COMPONENTS IN KIT



(2) PLASTIC FLIPPERS



(2) SPRINGS



(2) BOLTS



(2) LOCK NUTS



(2) WASHERS

TOOLS NEEDED

DRILL



3/16" DRILL BIT

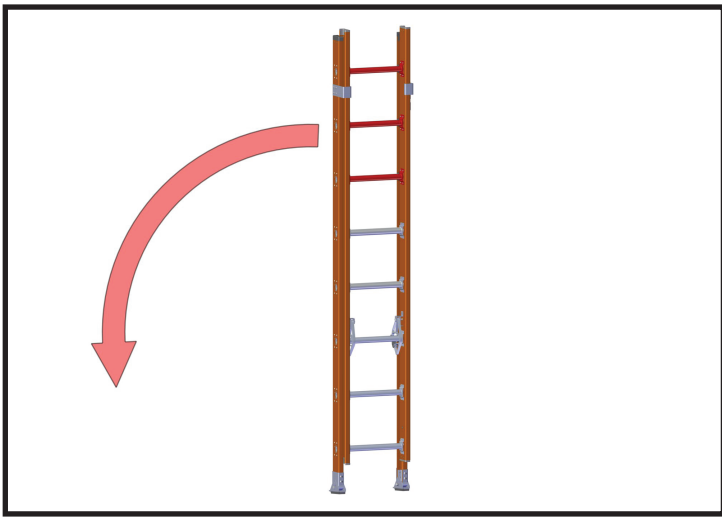


(2) 3/8" WRENCH

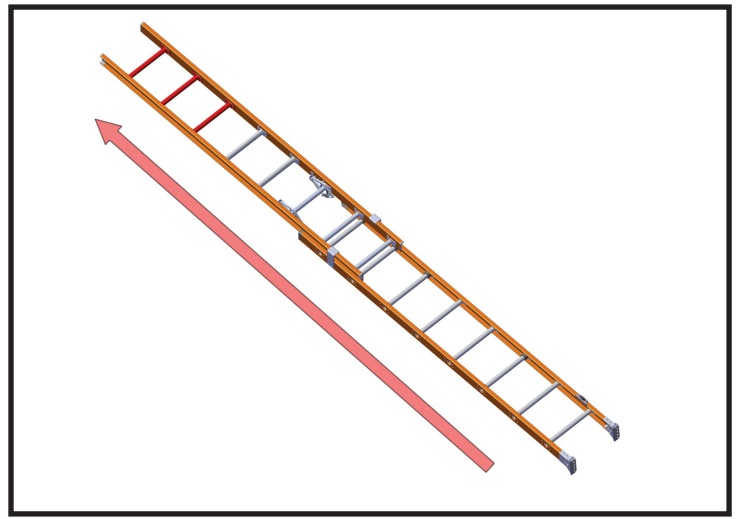


NOTE: IF ANY OTHER PART OF THE LADDER IS DAMAGED BEFORE OR DURING THE PROCESS OF INSTALLING AND/OR REPAIRING, DISCARD THE LADDER OR CONTACT CUSTOMER CARE FOR INSTRUCTIONS.

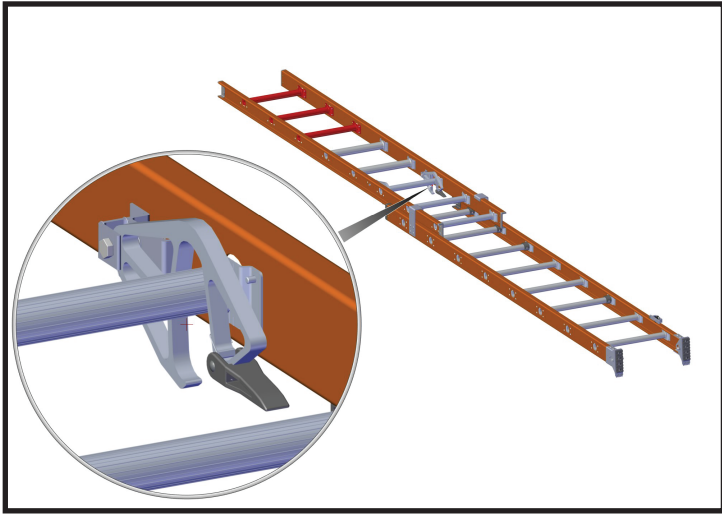
DO NOT USE A DAMAGED LADDER!



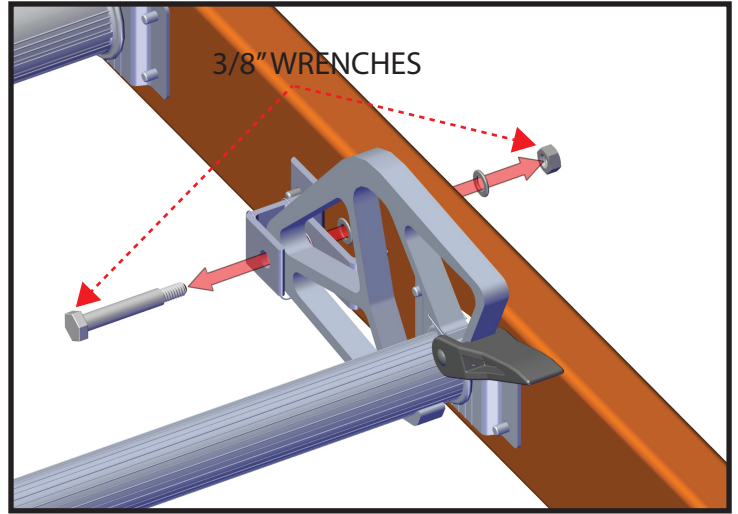
1. Lay the ladder flat to make steps 2-11 easier.



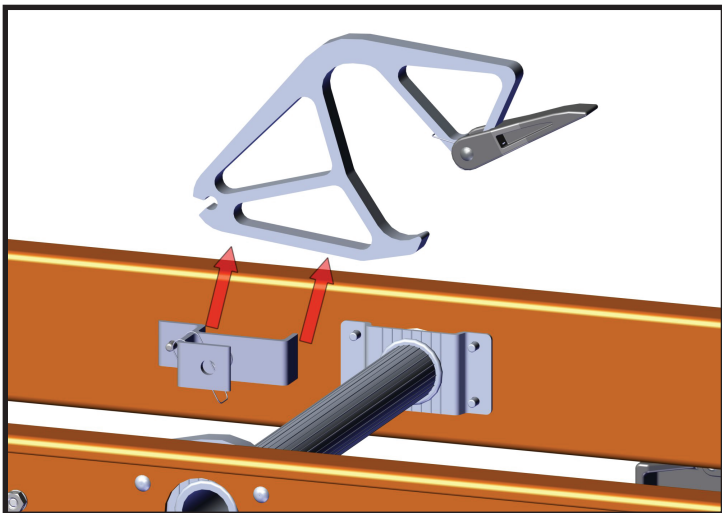
2. Fully extend your ladder.



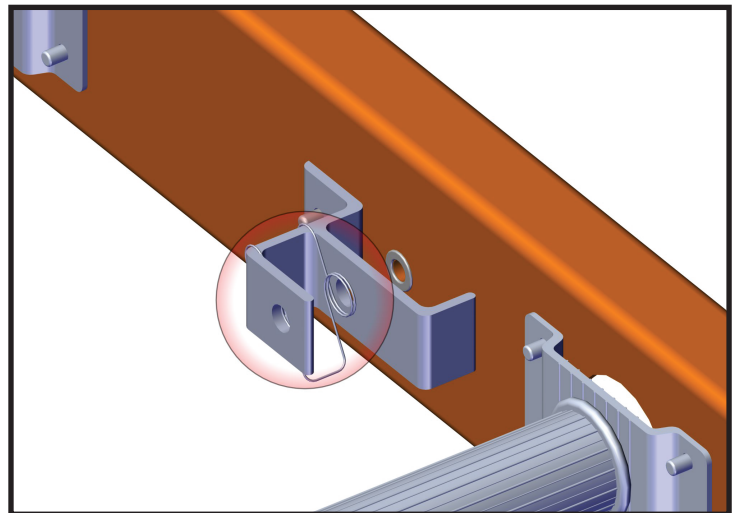
3. Identify the flipper and spring that need to be replaced.



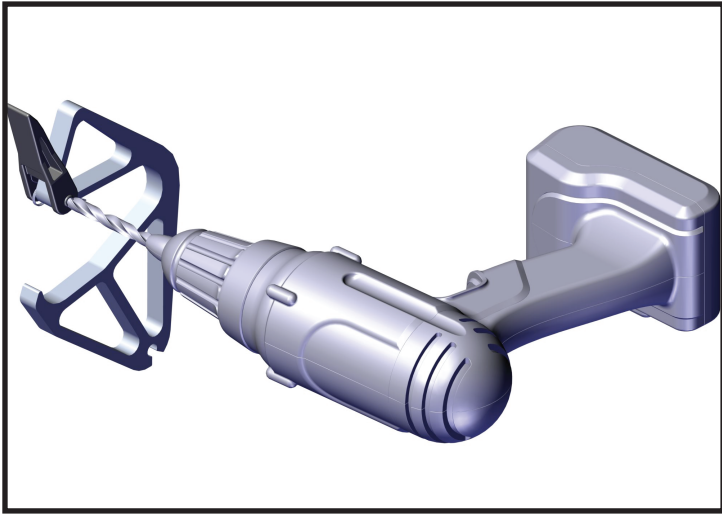
4. Using (2) 3/8" wrenches, loosen and remove the head hex bolt, washer and lock nut. Once removed, set aside.



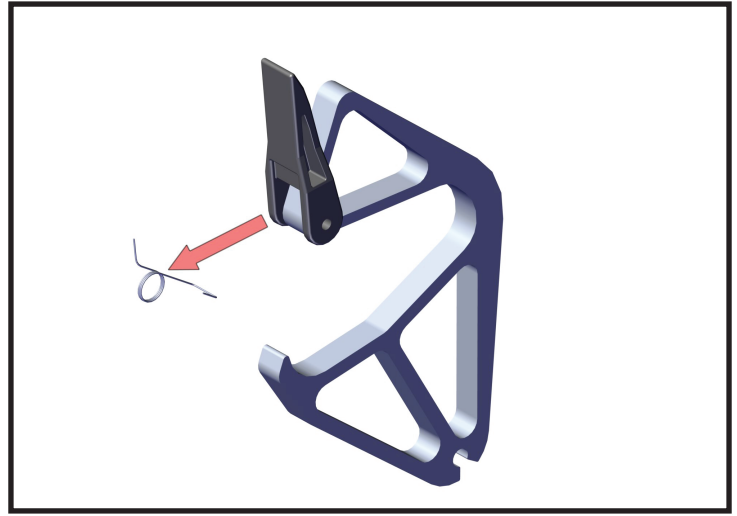
5. Remove the rung lock from the ladder to make the following steps easier.



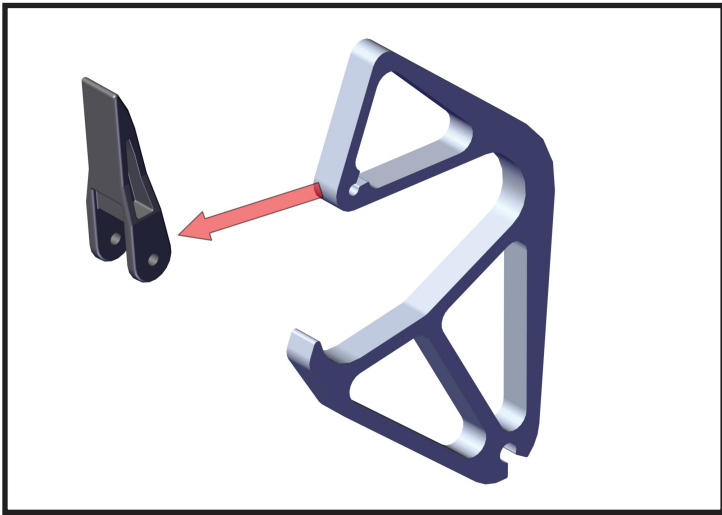
6. Identify the spring lock that sits with the rung lock and make sure that it stays seated in place.



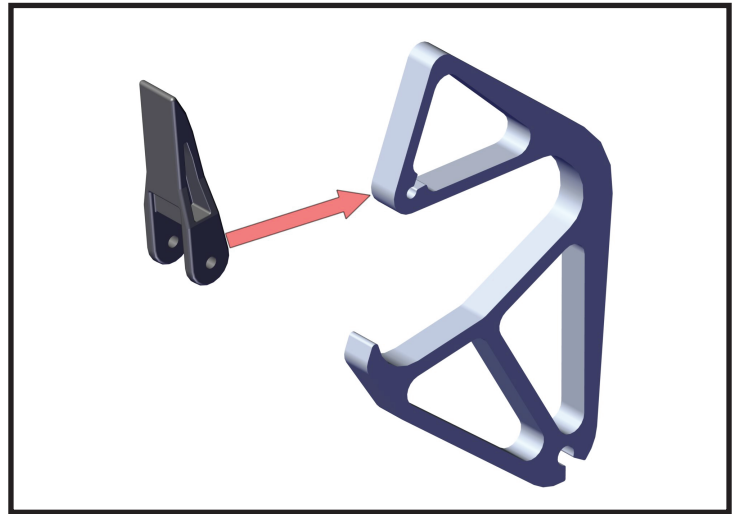
7. Using a drill and a 3/16" drill bit, drill through the head of the rivet that is holding the spring and flipper into place. (As shown in illustration).



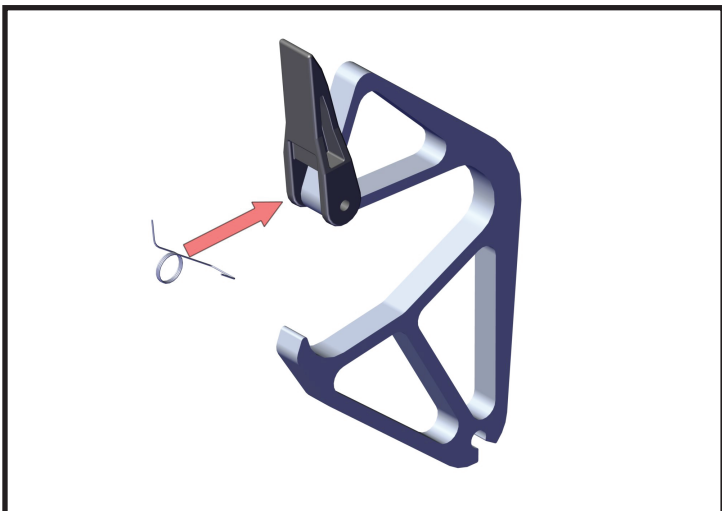
8. Remove the spring, and discard.



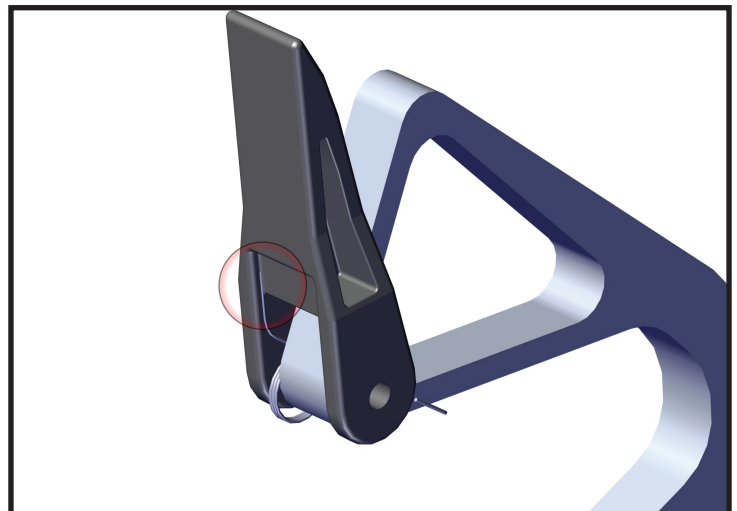
9. Remove the flipper, and discard.



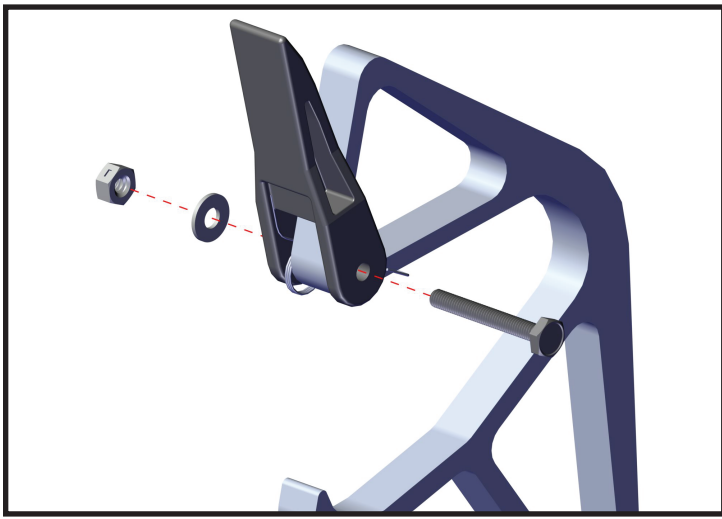
10. Replace with new flipper, included in kit.



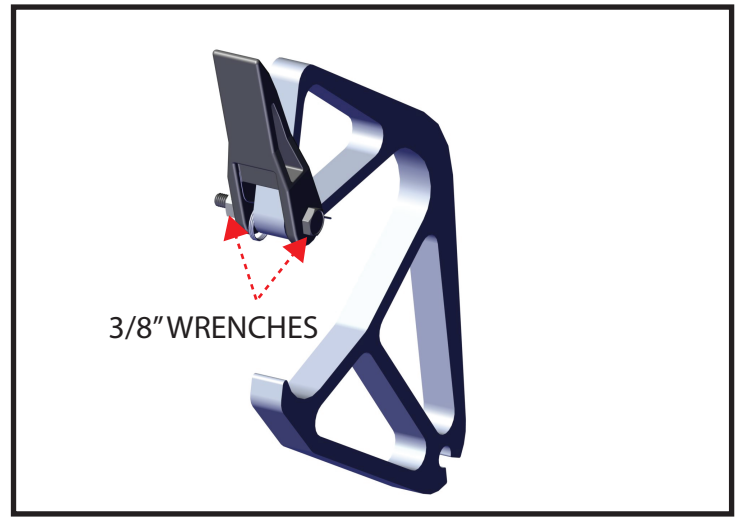
11. Replace with new spring, included in kit.



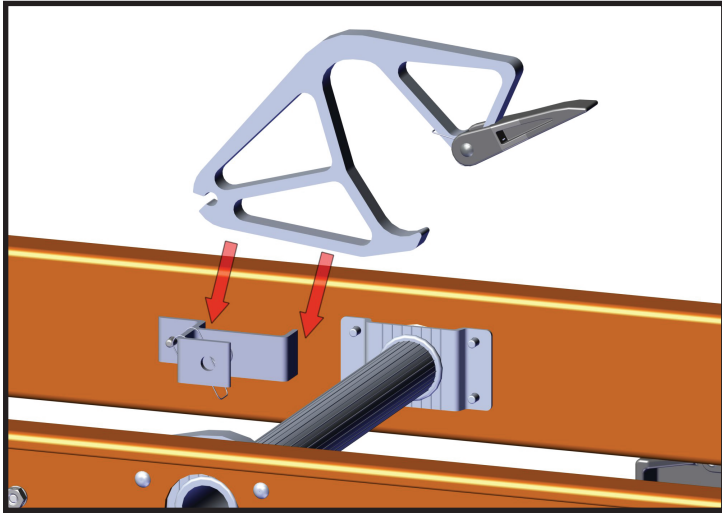
12. Make sure that the spring is situated as shown in the illustration.



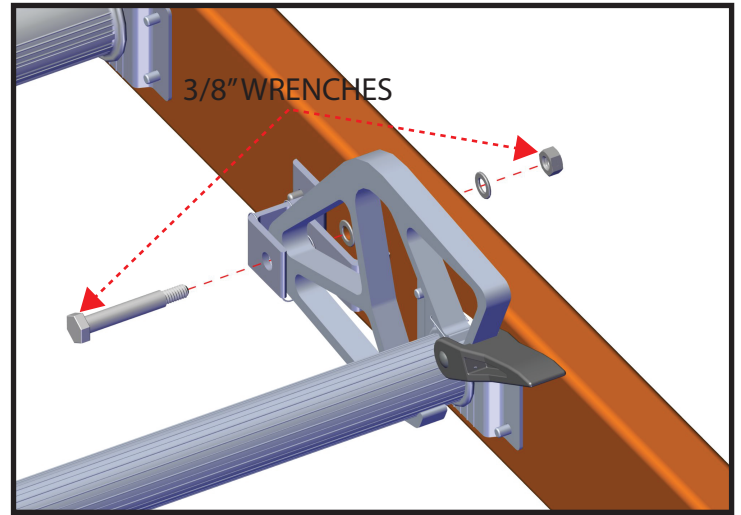
13. Insert the bolt through the flipper and spring as shown, line up with washer and lock nut.



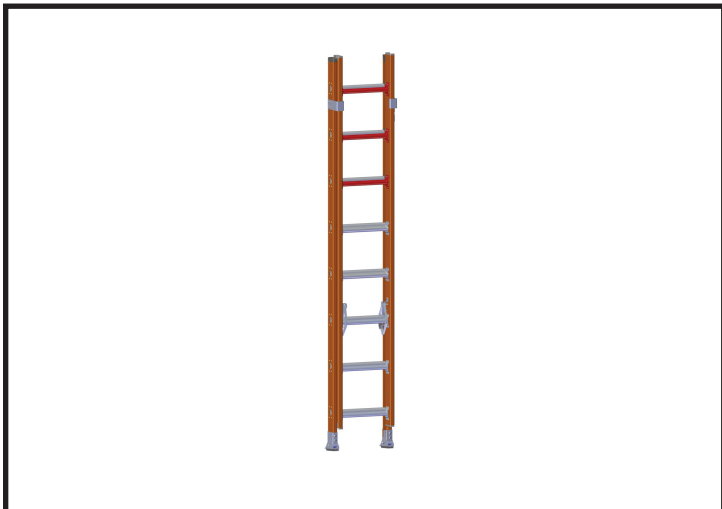
14 . Tighten with (2) 3/8" wrenches.



15. Reinsert the rung lock onto the ladder as shown in the illustration.



16. Insert hex head bolt washer and lock nut, as show in the illustration. Using (2) 3/8" wrenches tighten the nuts and bolts into place.



17. When all the steps are completed stand the ladder back up and make sure that the rung locks function properly before use.